
Under the auspices of the
WELSH MULE SHEEP BREEDERS' ASSOCIATION

Welshpool, Powys

Thirty Ninth Annual Sale of

6661 WELSH MULES



296 YEARLINGS AND 6365 EWE LAMBS

On Thursday, 7th October 2021

Sale at 10.30a.m. prompt

WELSHPOOL LIVESTOCK SALES

Official Auctioneers to the Welsh Mule Sheep Breeders
Welshpool (Tel: 01938 553438)

NOTICE TO VENDORS

ALL SHEEP TO BE PENNED BY 9.00 a.m. TO ALLOW AMPLE OPPORTUNITY FOR INSPECTION BY BUYERS PRIOR TO THE SALE, WHICH WILL COMMENCE AT 10.00 a.m. PROMPT. UNDER NO CIRCUMSTANCES WILL ANY SHEEP BE ALLOWED TO BE PENNED AFTER THE COMMENCEMENT OF THE SALE.

Vendors are requested to supervise the herding of their own sheep into the Selling Ring and back to their respective pens thereafter. Vendors must assist purchasers both during and after the sale.

CONDITIONS OF SALE

1. All sheep have been entered by Members of the Association on the prescribed form and are the progeny of Welsh Mountain, Welsh Hill, Speckled Beulah, Speckled Face Brecknock, Hill Cheviot and Pedigree Blue-faced Leicester Ram registered with the Blue-faced Leicester Sheep Breeders Association.
2. The Association reserves the right through its inspectors to prevent any sheep being put up for sale without stating its reasons for doing so.
3. The highest bidder shall be the purchaser, and if any dispute shall arise between two or more bidders, the lots in dispute to be put up again at the sum last bid, or the Auctioneers may declare the purchaser.
4. The biddings to be ruled by the Auctioneers shall not be less than £1.
5. No person shall retract a bidding without permission of the Auctioneers, who reserve to themselves the right of refusing a bidding, and also the right of withdrawing any lot or lots from the sale.
6. The purchaser to declare their names and addresses, and if required, to pay to the Auctioneers or their clerks the amount of the purchase money immediately on the fall of the hammer, and in default of which the Lot or Lots shall be offered again and re-sold, and under no circumstances must any lot be removed without first obtaining a pass from the clerk. Persons who are not known to the Auctioneers and intend making purchases must bring a Bankers' reference or other approved security for their satisfaction.
7. The Association through the Auctioneers reserve the right of deviating from the Catalogue either by amalgamation, dividing or withdrawing the lots prior to or during the sale as circumstances may require: and also deviating from the order or sale.
8. The Lots to be under the immediate care of Purchasers who must remove same at their own risk, on the day of sale, and no purchase shall be allowed to be removed from the Premises until the whole of the Purchase Money is paid.
9. **The Vendor guarantees sheep to be sound in mouth, udder and feet on day of sale. In the case of any complaints, buyers must notify the Auctioneers within 24 hours of the closure of sale in regard to cases of Footrot, Orf and Sore Mouth, and within 7 days of the sale in regard to teeth and udder. The decision of the Association shall be final.**
A Vendor having allowed a wether lamb to pass through the sale and sold as ewe lamb will not be paid for that lamb and the buyer will be refunded the amount paid by him for the "ewe lamb" vendor losing all claims provided the Auctioneers are informed within 4 weeks.
10. Upon failure to comply with the above Conditions, the uncleared lots will be resold, either by Public or Private Sale, and the deficiency (if any) and all expenses attendant thereon shall be made good by the defaulters at this Auction who shall have no claim for any surplus that may arise.
11. All entries are accepted subject to the foregoing conditions.
12. No set-off or deduction will, under any circumstances, be allowed.
13. The Association is not a party to any contract to purchase animals at the sale. The Association accepts no liability whatsoever for any loss arising from the sale of the sheep in the Association's official sales.

14. Whilst the Association makes available to intending and actual purchasers the services of its Field Officer, the Association does not accept liability for any advice, omission, opinion or inspection undertaken by the officially appointed Panel of Inspectors or the Association's Field Officer either prior, during or after the sale. It is for the Vendor and the Purchaser to satisfy themselves as to the quality of the livestock in the auction.
15. Whilst the Association endeavours to ensure the quality of sheep presented in the official sales and arranges for all sheep on offer to be inspected by an approved Panel of Inspectors. The Association gives no warranty in relation to the sheep presented for sale and the Association does not accept any liability whatsoever for any issue that may arise in relation to the quality or health of the animals presented for sale.
16. Whilst the Association will use its best endeavours to ensure the quality and health of the livestock on offer for sale, the Association and its Officers accept no liability, howsoever arising, to either Purchasers or Vendors for any injuries or illness suffered by livestock entered into the sale. It is the Vendors obligation to ensure that all livestock entered is suitable for the sale and in compliance with the conditions of entry.
17. If the parties are unable to agree upon the determination of any sum or monetary obligation due from one party to the other in connection with this agreement or in relation to any other dispute relating to livestock sold or purchased at the auction, the buyer and the seller agree that the dispute or difference shall be settled by an expert to be appointed between the parties or, in default of agreement, by the Association, such person to act as expert and not as arbitrator and his decision to be binding on all the parties.

NOTE TO PURCHASERS

The Welsh Mule Sheep Breeders' Association extends a warm welcome to buyers at its Thirty Ninth official sale at Welshpool.

The Entry of Sheep catalogued have been bred on the traditionally hard and healthy hill farms of Wales.

The Society members are obliged to use Rams officially approved by the Blue-Faced Leicester Society as sires for the Welsh Mules on offer, and, the sheep have to be bred from either the hardy Welsh Mountain, Speckled Face, or Beulah ewes, all hill breeds renowned for their hardiness and exceptional mothering qualities.

Despite the fact that the Welsh Mule Society was only officially formulated in 1976 — the breed is already firmly established throughout England and Wales (and in Scotland) as one of the most popular breeds for crossing with recognised fat lamb sires for the production of Prime quality lean fleshed lambs as now demanded by both the British housewife and continental markets.

The sheep are acclaimed as excellent mothers giving minimal lambing problems, good milkers, yield wool of a high grade and are of a temperament to adapt to either intensive outdoor or indoor wintering systems. Other commercial characteristics of the breed being their ability to produce early maturing Prime lambs, and longevity resulting in low depreciation rates for buyers.

Breeding Stock and their lambs have been exhibited at the major National Shows and National Sheep Association events in 2020 and a wide spectrum of Prime Lamb producers were most favourably impressed with the quality of the sheep and of their potential in fulfilling the present day requirements of the meat trade.

Buyers can be assured that there will be adequate transport available for the prompt despatch of sheep purchased to any part of the U.K.

It is the intention of the Association to ensure complete satisfaction, all sheep on offer will be approved by an officially appointed panel of inspectors prior to being offered for sale. The Society's field officer, Mr W Jones, will be present at the sale and services will be available to all intending and actual purchasers both during and after the sale day.

Performance Welsh Mules

The Welsh Mule Sheep Breeders Association has provided the sheep industry with high performing, profitable breeding ewes that have benefitted from the maximum amount of hybrid vigour for many years. The benefits of hybrid vigour are at their highest when two breeds are used and that vigour decreases as more breeds are added to the mix. The crossing of the Blue-Faced Leicester with Welsh Mountain and hill breeds has been a proven method of maximising the benefits of hybrid vigour.

A group of Welsh Mule breeders have asked to take the process a little further by supplying Welsh Mule ewe lambs for sale at the association's sales that have been produced by using a 'Performance' recorded Blue-Faced Leicester ram; those ewe lambs are being called simply 'Performance' Welsh Mules.

In order to qualify to market their sheep as 'Performance' Welsh Mules, breeders will have to meet a few simple qualifying criteria.

'Performance' Welsh Mule breeders will need to work with the Blue-Faced Leicester Association and the Welsh Mule Sheep Breeders Association to formally identify 'Performance' Welsh Mules sired that perform above-average on the index of recorded Blue-Faced Leicester Rams.

All 'Performance' Welsh Mules in any one pen must be sired by a Blue-Faced Leicester Ram with an index in the top 50% in the year of purchases, according to Signet 'Performance' recorded data. This data is also available on the BASCO website.

Each 'Performance' Welsh Mule breeder can contact the Blue-Faced Leicester Sheep Association for a certificate which highlights the identify of the qualifying ram or rams used. These certificates can be displayed on the pens at the Welsh Mule sales.

All 'Performance' Welsh Mules will be identified in the sale catalogue with the letters PM shown in bold, immediately after the lot number e.g. if lot 371 is a pen of 'Performance' Welsh Mules then it will appear as 371**PM** in the catalogue.

IN 2013, Blue-Faced Leicester Rams with an index above 97 were marked as Qualifying Rams for the purpose of producing 'performance' Welsh Mules and this status remains with the ram for its lifetime. In 2014 the index stood at 111 or above.

The Welsh Mule Sheep Breeders Association and Blue-Faced Leicester Association will continue to work together as this initiative develops.

IF YOU WANT A GOOD DEAL - INVEST IN THE BEST AND BUY WELSH MULES

General Secretaries:

W.A.O.S. Ltd., Gorseland, P.O. Box 8, North Road, Aberystwyth SY23 2WB

Tel: (01970) 636688

Field Officer: Mr W Jones Tel: 07854 600667

Hotels, Guest House and Bed and Breakfast in Welshpool

Mr & Mrs Slack, Moors Farm, Welshpool Powys SY21 8JR

Mr & Mrs Jones, Moat Farm, Welshpool Powys SY21 8SE

Mr & Mrs Emberton, Tynllwyn, Welshpool Powys SY21 9B

Royal Oak Hotel, Welshpool Powys SY21 7DG

The Talbot Hotel, Berriew, Welshpool Powys SY21 8PJ

Telephone

01938 553395

01938 553179

01938 553175

01938 552271

01686 640881

ROAD HAULAGE

A. E. JONES

Tel: (01570) 872946

M. E. EDWARDS & SONS

Tel: (01938) 810362

BOWEN & SON

Tel: 07908 780259

K. EVANS

Tel: 07768 995491

T. HODNETT

Tel: 07967 630366

Lairage can be made available for Wednesday 6th October 2021, but **MUST BE** pre-booked with the Auctioneers.

1. **All Yearling Ewes for the 2021 sales must have full EID Tags (Purple)**
2. **All Ewe lambs for the 2021 Sales must have full EID Tags (Green)**
3. Yearling Ewes should have a **Yellow E.I.D Tag** in one ear and a **MATCHING Purple Tag** in the other ear **OR a MATCHING pair of Red replacement tags**, one in each ear.
4. Ewe lambs should have a **Yellow E.I.D Tag** in the left ear and a **MATCHING Green Tag** in the other ear
5. Ewe lambs should have a **Yellow E.I.D Tag** in the left ear and a **MATCHING Blue Tag** in the other ear for the 2022 sales.

**Top price pen of Ewe Lambs will receive a 2.5 litre bottle
of Liquithrive kindly sponsored by Agri Lloyd
Christine Lewis 07976 920661**



THURSDAY 7TH OCTOBER 2021

CATALOGUE

Sale commences at 10.30 a.m. prompt

ORDER OF CATALOGUE - The sheep will be sold in Catalogue order
which has been DRAWN BY BALLOT under the supervision
of the Welsh Mule Sheep Breeders Association Ltd.

YEARLINGS

AG & JK Davies, Upper Esgair, Abbeycwmhir

1 6 Yearlings

UK720860

F/A
Heptavac P+ x2
Footvax
Gold Fleece

W C & J M Gittins, Ashton Farm, Castle Caereinion

2 20 Yearlings
3 20 Yearlings
4 20 Yearlings
5 20 Yearlings
6 20 Yearlings
7 20 Yearlings
8 20 Yearlings
9 20 Yearlings
10 20 Yearlings

UK701688

F/A
Heptavac P
Gold Fleece
Zermex

D I Roberts & Son, Stingwern, Brooks

11 10 Yearlings
12 10 Yearlings
13 10 Yearlings
14 10 Yearlings
15 10 Yearlings
16 10 Yearlings

UK700730

F/A
Heptavac P+
Gold Fleece
Footvax
Enzovax
Toxovax

C Williams, Wern Isaf, Llangollen

17 20 Yearlings
18 20 Yearlings
19 10 Yearlings

UK705737

F/A
Heptavac P
Dipped

EWE LAMBS

E W Williams, Penllwyn, Rhiwhiriaeth

21	20	Ewe Lambs
22	20	Ewe Lambs
23	20	Ewe Lambs
24	20	Ewe Lambs
25	20	Ewe Lambs
26	20	Ewe Lambs

UK701047

F/A
Heptavac P+ x2
Gold Fleece
Scabivax

H Hughes & Son, Hendy, Abbeycwmhir

27	20	Ewe Lambs
28	20	Ewe Lambs

UK720865

F/A
Heptavac P+ x2
Gold Fleece

Neuaddgoch Farm Ltd, Neuaddgoch, Adfa

29	25	Ewe Lambs
30	25	Ewe Lambs

UK700767

F/A
Heptavac P
Scabivax
Gold Fleece

R Evans & Partners, Hafod Y Foel, Llanbrynmair

31	25	Ewe Lambs
32	25	Ewe Lambs
33	25	Ewe Lambs
34	25	Ewe Lambs

UK700867

F/A
Gold Fleece
Scabivax

J Hughes, Pencwm, Bow Street

35	20	Ewe Lambs
36	20	Ewe Lambs
37	20	Ewe Lambs
38	20	Ewe Lambs
39	20	Ewe Lambs
40	20	Ewe Lambs
41	20	Ewe Lambs
42	20	Ewe Lambs
43	20	Ewe Lambs
44	20	Ewe Lambs

UK714588

F/A
Gold Fleece
Heptavac P+ x2

A E Thomas & Son, Glanrafon, Llananno

45	20	Ewe Lambs
46	25	Ewe Lambs
47	25	Ewe Lambs
48	10	Ewe Lambs
49	10	Ewe Lambs
50	10	Ewe Lambs
51	10	Ewe Lambs

UK720874

F/A
Heptavac P+ x2
Scabivax
Crovect
Cydectin LA

A J & J M Abberley, Cerrigcroes, Llanyre

52	25	Ewe Lambs
53	25	Ewe Lambs
54	25	Ewe Lambs
55	25	Ewe Lambs
56	25	Ewe Lambs

UK721523

F/A
Gold Fleece
Heptavac P x2
Scabivax

57	25	Ewe Lambs
58	25	Ewe Lambs
59	25	Ewe Lambs
60	25	Ewe Lambs
61	25	Ewe Lambs
62	25	Ewe Lambs
63	25	Ewe Lambs
64	25	Ewe Lambs
65	25	Ewe Lambs
66	25	Ewe Lambs
67	25	Ewe Lambs
68	25	Ewe Lambs
69	25	Ewe Lambs
70	25	Ewe Lambs
71	25	Ewe Lambs
72	25	Ewe Lambs
73	25	Ewe Lambs
74	25	Ewe Lambs
75	25	Ewe Lambs
76	25	Ewe Lambs
77	25	Ewe Lambs
78	25	Ewe Lambs
79	25	Ewe Lambs
80	25	Ewe Lambs
81	25	Ewe Lambs
82	25	Ewe Lambs
83	25	Ewe Lambs
84	25	Ewe Lambs
85	25	Ewe Lambs
86	25	Ewe Lambs
87	25	Ewe Lambs

CG Davies & Son, Tynypwll, Dolwen

88	25	Ewe Lambs
89	25	Ewe Lambs

UK700453

F/A
Heptavac P+
Gold Fleece

J E & S J Roberts, Pantybriallu, Castle Caereinion

90	20	Ewe Lambs
91	20	Ewe Lambs
92	20	Ewe Lambs
93	20	Ewe Lambs
94	20	Ewe Lambs

UK701682

F/A
Heptavac P+ x2
Scabivax
Gold Fleece

E P Hughes & Co, Porth, Llananno

95	25	Ewe Lambs
96	25	Ewe Lambs
97	25	Ewe Lambs
98	25	Ewe Lambs
99	25	Ewe Lambs
100	25	Ewe Lambs
101	25	Ewe Lambs
102	25	Ewe Lambs
103	25	Ewe Lambs

UK720878

F/A
Heptavac P
Scabivax
Gold Fleece

E Jones & Son, Melindwr, Llwydiarth

104 25 Ewe Lambs
 105 20 Ewe Lambs

UK700242

Heptavac P x2
 Scabivax
 Dipped

SL & H Jerman, Tuhwrtirafon, Carno

106 20 Ewe Lambs
 107 20 Ewe Lambs
 108 20 Ewe Lambs
 109 20 Ewe Lambs

UK700412

F/A
 Heptavac P x2
 Scabivax
 Dectomax
 Crovect
UK701207
 F/A

ET Bound & Co, Tynymaes, Llangurig

110 15 Ewe Lambs
 111 15 Ewe Lambs
 112 15 Ewe Lambs

J C Davies & Son, Gelli Gethin, Llanfair Caereinion

113 20 Ewe Lambs
 114 20 Ewe Lambs
 115 20 Ewe Lambs
 116 20 Ewe Lambs
 117 20 Ewe Lambs
 118 20 Ewe Lambs
 119 20 Ewe Lambs
 120 20 Ewe Lambs
 121 20 Ewe Lambs
 122 10 Ewe Lambs
 123 10 Ewe Lambs

UK701011

F/A
 Heptavac P+ x2
 Scabivax
 Gold Fleece

J Hughes & L Davies, Rogerstone, Glasbury

124 20 Ewe Lambs
 125 20 Ewe Lambs
 126 20 Ewe Lambs

UK729014

Heptavac P x2
 Gold Fleece
 Scabivax

Jones Bros, Ystradolwyn, Llangurig

127 20 Ewe Lambs
 128 20 Ewe Lambs
 129 20 Ewe Lambs

UK701191

F/A

J M Gayther, Little Grogau, Llanbister

130 25 Ewe Lambs
 131 25 Ewe Lambs
 132 20 Ewe Lambs
 133 20 Ewe Lambs

UK721148

Scabivax
 Gold Fleece

G K E & L A Rees & Son, Tynlone, Rhayader

134 25 Ewe Lambs
 135 25 Ewe Lambs
 136 25 Ewe Lambs
 137 25 Ewe Lambs
 138 25 Ewe Lambs
 139 25 Ewe Lambs
 140 25 Ewe Lambs
 141 25 Ewe Lambs

UK721587

F/A
 Organic
 Heptavac P x2
 Cydectin
 Scabivax

142	25	Ewe Lambs
143	25	Ewe Lambs
144	25	Ewe Lambs
145	25	Ewe Lambs
146	25	Ewe Lambs
147	25	Ewe Lambs

A G & J K Davies, Upper Esgair, Abbeycwmhir

148	20	Ewe Lambs
149	20	Ewe Lambs
150	20	Ewe Lambs
151	20	Ewe Lambs

UK720860

F/A
Heptavac P+ x2
Scabivax
Gold Fleece

H Watkins, Cammen Uchaf, Llanfihangel

152	25	Ewe Lambs
153	25	Ewe Lambs
154	25	Ewe Lambs
155	25	Ewe Lambs

UK700262

Heptavac P+ x2
Scabivax
Dectomax

D H Tilsley, Fox Hill, Shelve

156	20	Ewe Lambs
157	20	Ewe Lambs
158	20	Ewe Lambs
159	20	Ewe Lambs
160	20	Ewe Lambs
161	20	Ewe Lambs
162	20	Ewe Lambs
163	20	Ewe Lambs

UK700758

F/A
Heptavac P
Dipped

H M & G E Davies, Aberdauddwr, Llandewi Brefi

164	20	Ewe Lambs
165	20	Ewe Lambs

UK747401

F/A
Heptavac P+ x2
Scabivax
Gold Fleece

B J & M Y Davies, Gorse Farm, St Harmon

166	25	Ewe Lambs
167	25	Ewe Lambs
168	25	Ewe Lambs
169	25	Ewe Lambs
170	25	Ewe Lambs
171	25	Ewe Lambs
172	25	Ewe Lambs
173	25	Ewe Lambs

UK721620

F/A
Heptavac P+ x2
Scabivax
Gold Fleece

H I Wilson & Co, Bwlch Henllan, Lower Chapel

174	20	Ewe Lambs
175	20	Ewe Lambs
176	20	Ewe Lambs

UK720455

F/A
Dectomax
Heptavac P x2
Scabivax
Footvax

J C Hamer, Cwm, Dolwen

177	10	Ewe Lambs
178	10	Ewe Lambs
179	20	Ewe Lambs
180	20	Ewe Lambs
181	20	Ewe Lambs
182	20	Ewe Lambs
183	20	Ewe Lambs

UK700456

F/A
Heptavac P+ x2
Cydectin LA
Crovect
Scabivax

A Rowlands & Son, Noyadd Fach, Nantmel

184	10	Ewe Lambs
185	20	Ewe Lambs
186	20	Ewe Lambs
187	20	Ewe Lambs
188	20	Ewe Lambs
189	20	Ewe Lambs
190	20	Ewe Lambs

UK721568

F/A
Heptavac P+
Scabivax
Gold Fleece

I C Goodwin, Lower Esgair, Llanbadarn Fynydd

191	20	Ewe Lambs
192	20	Ewe Lambs
193	20	Ewe Lambs

UK720915

F/A
Heptavac P+ x2
Orf
Gold Fleece

D G Pugh & Co, Birches, Llanidloes

194	20	Ewe Lambs
195	20	Ewe Lambs
196	20	Ewe Lambs
197	20	Ewe Lambs
198	20	Ewe Lambs
199	20	Ewe Lambs
200	20	Ewe Lambs

UK700479

F/A
Heptavac P+ x2
Cydectin LA
Scabivax
Zermex

D A Davies & Son, Deildre Fawr, Llanidloes

201	20	Ewe Lambs
202	20	Ewe Lambs
203	20	Ewe Lambs
204	20	Ewe Lambs
205	20	Ewe Lambs

UK701264

F/A
Heptavac P x2
Scabivax
Cydectin
Crovect

G Davies, Penrhallt, Nant Y Rhiw

206	20	Ewe Lambs
207	20	Ewe Lambs

UK704970

F/A
Heptavac P x2
Gold Fleece

C Thomas, Beili Ddol Farm, Rhayader

208	25	Ewe Lambs
209	25	Ewe Lambs
210	25	Ewe Lambs
211	25	Ewe Lambs
212	25	Ewe Lambs
213	25	Ewe Lambs
214	25	Ewe Lambs
215	25	Ewe Lambs
216	25	Ewe Lambs

UK724246

F/A
Heptavac P+
Gold Fleece

Yeomans & Partners, Llwyn Y Brain, Adfa

217 20 Ewe Lambs
218 20 Ewe Lambs
219 20 Ewe Lambs

UK700764

F/A
Ivermectin
Heptavac P
Scabivax
Ivermectin

A Roberts & Sons, Dolau, Llanerfyl

220 20 Ewe Lambs
221 20 Ewe Lambs
222 20 Ewe Lambs
223 20 Ewe Lambs

UK700974

F/A
Heptavac P x2
Scabivax
Gold Fleece

R A C Williams & Son, Glyndwr, Llanfair Caereinion

224 20 Ewe Lambs
225 20 Ewe Lambs
226 20 Ewe Lambs

UK700995

F/A
Heptavac P+ x2
Gold Fleece
Scabivax

T E & D Jones, Penlan Gwnnws, Ystrad Meurig

227 25 Ewe Lambs
228 20 Ewe Lambs

UK743770

F/A
Heptavac P+ x2
Scabivax
Gold Fleece
Drenched

J E Evans & Son, Middle Nantserth, Rhayader

229 15 Ewe Lambs
230 15 Ewe Lambs
231 20 Ewe Lambs
232 20 Ewe Lambs
233 20 Ewe Lambs
234 20 Ewe Lambs
235 20 Ewe Lambs
236 20 Ewe Lambs
237 20 Ewe Lambs

UK721596

F/A
Heptavac P+ x2
Gold Fleece

G Price, Hafod, Llaithddu

238 25 Ewe Lambs
239 25 Ewe Lambs
240 25 Ewe Lambs
241 25 Ewe Lambs
242 25 Ewe Lambs
243 25 Ewe Lambs
244 25 Ewe Lambs
245 30 Ewe Lambs
246 30 Ewe Lambs
247 25 Ewe Lambs
248 20 Ewe Lambs
249 20 Ewe Lambs

UK720921

F/A
Heptavac P+ x2
Scabivax
Gold Fleece

J Thomas & Son, Tanhouse, Dolau

250	20	Ewe Lambs
251	20	Ewe Lambs
252	20	Ewe Lambs
253	20	Ewe Lambs
254	20	Ewe Lambs
255	25	Ewe Lambs
256	25	Ewe Lambs
257	25	Ewe Lambs
258	25	Ewe Lambs
259	20	Ewe Lambs
260	20	Ewe Lambs
261	20	Ewe Lambs

UK720974

F/A
Heptavac P x2
Gold Fleece
Scabivax

C D Gittins & Co, Lower Llifior, Berriew

261A	20	Ewe Lambs
261B	20	Ewe Lambs
261C	20	Ewe Lambs
261D	10	Ewe Lambs

UK700721

F/A
Gold Fleece
Heptavac P+
Scabivax

J T & J A Davies & Son, Upper Cilgee, Doldowlod

262	25	Ewe Lambs
263	25	Ewe Lambs
264	25	Ewe Lambs
265	25	Ewe Lambs
266	25	Ewe Lambs
267	25	Ewe Lambs
268	25	Ewe Lambs
269	25	Ewe Lambs
270	25	Ewe Lambs

UK701011

F/A
Heptavac P+ x2
Gold Fleece
Fluke & Wormed
Vitamin Drench

J W Rees & Son, Nantyrhendy, Llangurig

271	25	Ewe Lambs
272	25	Ewe Lambs
273	25	Ewe Lambs
274	25	Ewe Lambs

UK701209

F/A
Heptavac P x2
Scabivax
Gold Fleece

C Thomas, Upper Llaithddu, Llaithddu

275	25	Ewe Lambs
276	25	Ewe Lambs
277	25	Ewe Lambs
278	25	Ewe Lambs
279	25	Ewe Lambs
280	25	Ewe Lambs
281	25	Ewe Lambs
282	25	Ewe Lambs
283	25	Ewe Lambs

UK724246

F/A
Gold Fleece

A M Jones, Middle Farm, Rorrington

284 20 Ewe Lambs
 285 20 Ewe Lambs
 286 20 Ewe Lambs

UK305050

F/A
 Gold Fleece
 Heptavac P+ x2
 Drenched

J M Price, Maeshyfyrd, Llanfihagel

287 20 Ewe Lambs
 288 15 Ewe Lambs
 288A 10 Ewe Lambs

UK700260

F/A
 Heptavac P+ x2
 Gold Fleece

E N & E J Bound, Cefnbeidiog, Llanidloes

289 20 Ewe Lambs
 290 20 Ewe Lambs
 291 20 Ewe Lambs
 292 20 Ewe Lambs
 293 25 Ewe Lambs

UK709590

F/A
 Heptavac P x2
 Scabivax
 Gold Fleece

J M & S M Rowlands, Dolwen, Llanidloes

294 20 Ewe Lambs
 295 20 Ewe Lambs
 296 20 Ewe Lambs
 297 20 Ewe Lambs
 298 20 Ewe Lambs
 299 20 Ewe Lambs
 300 20 Ewe Lambs

UK700481

F/A
 Scabivax
 Bravoxin 10 x2
 Dipped

J E Owen & Co, Gilfach, Aberhafesp

301 20 Ewe Lambs

UK701335

F/A
 Dectomax
 Heptavac P x 2
 Scabivax

S & D J Williams, Cefnlllech, Pantydwr

302 20 Ewe Lambs
 303 20 Ewe Lambs
 304 20 Ewe Lambs
 305 20 Ewe Lambs

UK721628

F/A
 Heptavac P+
 Gold Fleece

G H Williams & Son, Penrhosmawr, Penegoes

306 15 Ewe Lambs
 307 15 Ewe Lambs
 308 10 Ewe Lambs

UK700926

F/A
 Bravoxin 10
 Dipped
 Wormed

Association Tag Colours for Ewe Lambs
Sequence 2022 to 2026

2022 - Blue
 2023 - Orange
 2024 - White
 2025 - Pink
 2026 - Brown

Welshpool

Annual Sale of Welsh Mule Sheep

Thursday 7th October 2021

Purchaser's Name _____
(in full)

Address _____
(in full)

Tel. No.: _____

Number of first lot bought _____

Each purchaser will oblige by filling in this slip and handing to the Auctioneer's Clerk on making his first purchase.



Shearwell Data

Livestock Systems

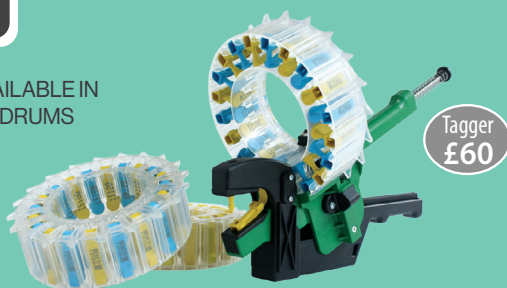
SHEARWELL IS PROUD TO SUPPORT THE WELSH MULE SALES



Turbo

Tagger

SET TAGS AVAILABLE IN
STRIPS OR DRUMS



FREE
Replacements

EID Readers

Farm Management
Software & apps

Sheep EID Crates

Lambing Equipment



CALL 01643 841611
www.shearwell.co.uk

Prices correct July 2021. All prices exclude VAT and delivery charges.